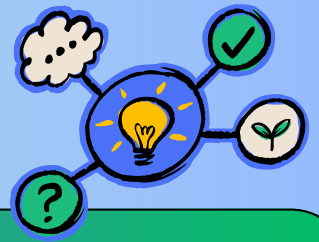


# YMHSOC STRUCTURE



CO-CHAIRS



## YMHSOC LEADERSHIP TABLE PROFESSIONALS AND YES TEAM MEMBERS

### COMMUNICATIONS TEAM

The communications team works to promote the work of the YMHSOC with the broader community across a variety of groups and sectors and shares information with and within the YMHSOC planning group to increase awareness, engagement, and alignment.

#### COMMUNITY-WIDE RESOURCE AND REFERRAL WORKGROUP

- **IRIS**
- Education, promotion
- Engagement
- Onboarding, training
- Troubleshooting
- Tracking, reporting
- Future Google BEACON

#### COMMUNICATIONS ROLE

Build awareness of community resources  
Build awareness of IRIS

#### AFFORDABLE, ACCESSIBLE, HIGH-QUALITY SERVICES WORKGROUP

- Use data and share results
- Prioritize optimal options
- Inform community
- Inform funders
- Encourage agency alignment, collaboration
- Recruit backbone support for implementation

#### COMMUNICATIONS ROLE

Share data with funders, community, agencies  
Promote and align work of YMHSOC, community

#### FRONT DOOR ACCESS AND ENGAGEMENT WORKGROUP

- **CVS sites**
- **Parent Action Team/PAT**
  - COFI
  - YES TEAM
- Outreach and education
- Expand PAT
- Recruit sites/providers
- Identify and build more nontraditional programs to fill gaps and meet needs

#### COMMUNICATIONS ROLE

Build awareness of and engagement with CVS sites, providers, parent action team, professionals

#### TRAINED & SUPPORTED PROFESSIONALS WORKGROUP

- Identify training needs
- Align with best practices
- Foster, model culture of shared training
- Partner with providers to offer trainings
- List, promote trainings on YMHSOC website
- *Foster career pathways and engage key players*

#### COMMUNICATIONS ROLE

Promote trainings from various providers and inform professionals and agencies

### HOW TO DEFINE SUCCESS

#### OUTCOMES:

- Awareness of community resources.
- Reduction in unmet needs of families participating in the MH system. (5)
- Effective local use of outcome measurement data to inform systems operations, including sharing data between service providers. (9)
- Positive impact on the integration of service system providers in the community. (1)

#### OUTCOMES:

- Educate and align findings with local providers.
- Provider Conversations and YES focus groups move towards informed system redesign.
- Improvement in life domain functioning for children with serious ED; including school participation and academic success variables. (2)
- Reduction in caregiver stress for parents of children with mental health concerns. (6)
- Lower suicide rates.
- Improved quality of life.
- Increased graduation rates and student attendance.
- Overhaul of DCFS and Family Court systems.

#### OUTCOMES:

- Early identification of children and youth with mental health concerns. (4)
- Increased parent and youth leadership in the local system of care. (8)
- Strengthening parenting practices and the parent-child relationship. (3)
- Parent-led service creation.
- A better understanding of needs.
- Wrap-around supports and community space to collaborate.
- Fewer hospitalizations.
- Destigmatization of receiving mental health services.
- Increased faith in the System.
- Reduction in caregiver stress.

#### OUTCOMES:

- Established, well-attended Community of Practice.
- Increased systemic capacity to provide evidence-based clinical interventions. (7)
- Early identification of youth with mental health needs. (4)
- Reduction in staff burnout and turnover, re-entry of LCSW's and others to direct services roles.
- Better treatment outcomes.
- Improved data quality.
- Form relationships with universities to increase career pathways; support local initiatives in developing additional pathways (via entities, and WCCMHB).

### HOW TO MEASURE RESULTS

#### INDICATORS OF SUCCESS:

- X% providers/programs in IRIS
- X# referrals per mo./yr.
- X# active users
- etc.

#### INDICATORS OF SUCCESS:

- Top # priorities identified
- Funders educated
- Key leaders educated
- Community educated
- Collaboration between # provides, agencies
- Backbone support secured
- # of HS graduates
- Change in # of suicides
- Change in caregiver stress
- # of improved areas of life domain functioning
- etc.

#### INDICATORS OF SUCCESS:

- # partner screening sites
- # screenings performed
- # successful referrals
- Front Door established
- # of parents engaged/leading
- # of nontraditional program sites, programs
- Change in number of hospitalizations
- etc.

#### INDICATORS OF SUCCESS:

- Communication methods established
- Newsletter targets identified and contacted.
- Newsletter launched
- # newsletter contacts
- # co-sponsored or shared trainings
- # providers modeling shared trainings
- etc.

Note: #'s listed under Indicators of Success correlate to CMHI Grant Deliverables